

INSTALLATION OF
GARMIN USB DRIVERS
FOR AMD64 PROCESSORS
RUNNING WINDOWS XP
PROFESSIONAL 64 BIT
EDITION

Introduction

With the advent of MS Windows 64 bit edition in conjunction with AMD 64 processors the normal Windows XP drivers are no longer functional on the Windows operating system.

At this time there are no USB drivers available in full tested form from Garmin and their U.K. technical support and South African agents deny the existence of suitable drivers for this application.

Garmin appears to the author to not be prepared to go an extra inch to assist with problem resolution for the man on the street.

Please be sure to read the entire document and especially the last paragraph containing the disclaimer for any problems which may result from your own experimentation.

Solution

The user must acquire the correct SYS files to update the drivers and install them manually to rectify the problem.

Acquisition of the drivers

On the Garmin website at http://www.garmin.com/support/download_details.jsp?id=3341 the latest Beta of Mapsource is available, the download is 15.94 megabytes (however the required driver files are only a few K bytes in size.)

Download and install the above beta as described by Garmin, the USB drivers for AMD 64 will be saved in the GARMIN installation directory in the subdirectory GARMIN\USB_DRIVERS\AMD64\ (amd64 directory)

Setting to work to install

This procedure presumes the incorrect drivers have already been installed and the GPS is plugged in and switched on using the USB port on your PC.

The driver files are named “grmngen.sys” and “grmnusb.sys”

There will be similar files in the directory

GARMIN\USB_DRIVERS\ (drivers directory)

Please copy the files by these names in the drivers directory and save them in a place on your PC where they can be found easily, in case you need to restore the system later.

Now copy the files by these names in the amd64 directory and paste them into the drivers directory.

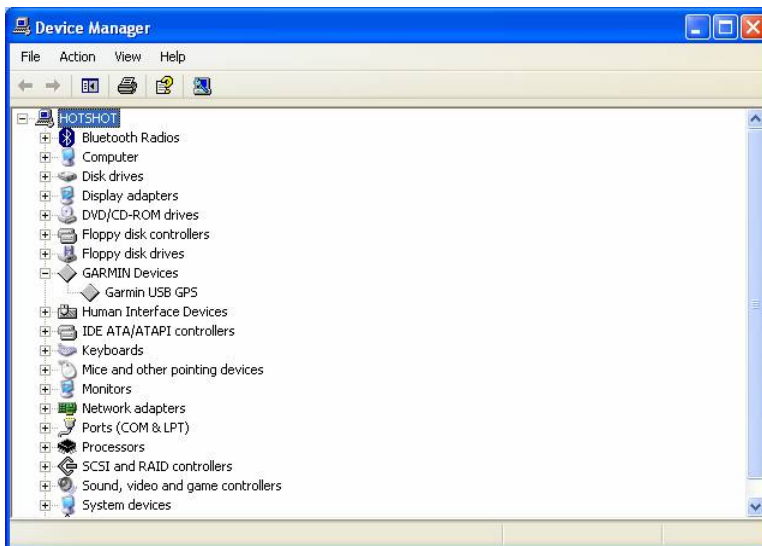
Now click the start button and right click the “My Computer” item on the menu.

Select Properties from the resulting pull down menu.

The following screen should open :-



Now click on Hardware tab at the top and the device manager button on the hardware tab. The hardware manager will open :-



However unlike the example above, the Garmin devices will be represented by an item with a yellow question mark indicating not fully functional.

Right click on the question mark item and from the resulting pull down menu select “update driver”

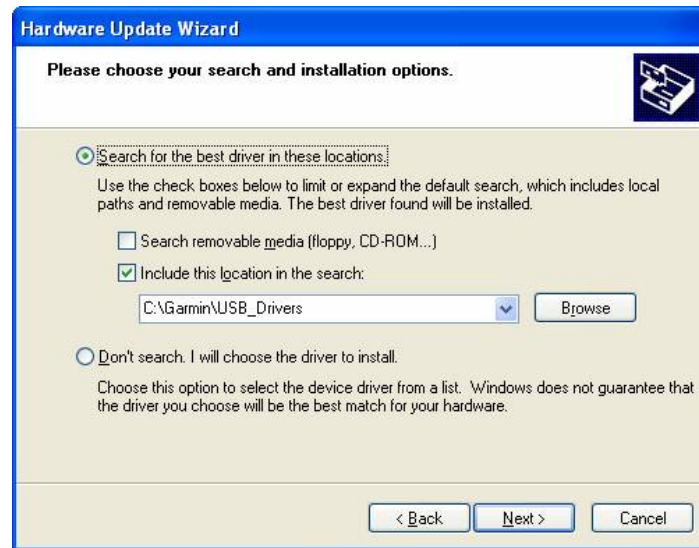
The following page opens :



Select “no not this time” followed by “Next>”



Select “install from specific location (Advanced)” followed by “Next>”



Select the “Search for best driver in these locations” radio button and deselect the check box for “Search removable media (floppy, CD-ROM...)” and then use the browse button to navigate to and select the correct drivers directory C:\Garmin\USB_Drivers as described in paragraph 4 of this document.

Select “Next>” and Windows will begin to chew away for a while, after which it should notify you that the driver is installed and working, the hardware manager screen must now appear as shown above with regard to Garmin devices, (obviously many of the other items will be quite different).

Disclaimer

The author provides this information in the best efforts to describe how a problem was resolved on his own computer. No liability is assumed or technical support provided or offered for the individual who may attempt to follow the same course of action.

Acknowledgements

Thanks to Andrew Taylor for providing the key and to TP and AC and WB at T4A for inspiring me to solve my own problem.