

Volume

14

TRACKS4AFRICA

Overland Navigation

**T4A GPS Maps
for MAC Users**

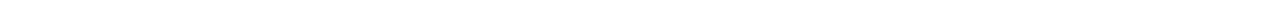
OVERLAND NAVIGATION

T4A GPS Maps for MAC Users

© Tracks4Africa Enterprises (PTY) Ltd
Unit 8, Innovation Center 1, Meson Street, Technopark
Stellenbosch, 7600, SOUTH AFRICA
Phone +27 21 880 8660 • www.tracks4africa.com

Table of Contents

Introduction	2
Installing T4A GPS Maps on MAC	3



Introduction

For Garmin Mac users we have converted the T4A GPS Maps to Mac compatible files and included these on our Tracks4Africa SD Card. Files can also be obtained by sending an e-mail to sales@tracks4africa.co.za together with your proof of payment. (SD card serial number and product key or your receipt for on-line transactions)

In order to use T4A GPS Maps on your Mac you would need to download the necessary Garmin applications, RoadTrip and MapInstall.

We strongly suggest that you start with the Garmin web site for more information.

The T4A GPS Maps have not been optimised for use on RoadTrip but we find them to be functional on this platform.

Installing T4A GPS Maps on MAC

Step1: Download Garmin Applications

Visit the Garmin website and download RoadTrip and MapInstall. MapInstall also includes MapManager.

Download from here: <http://www8.garmin.com/macosex/>

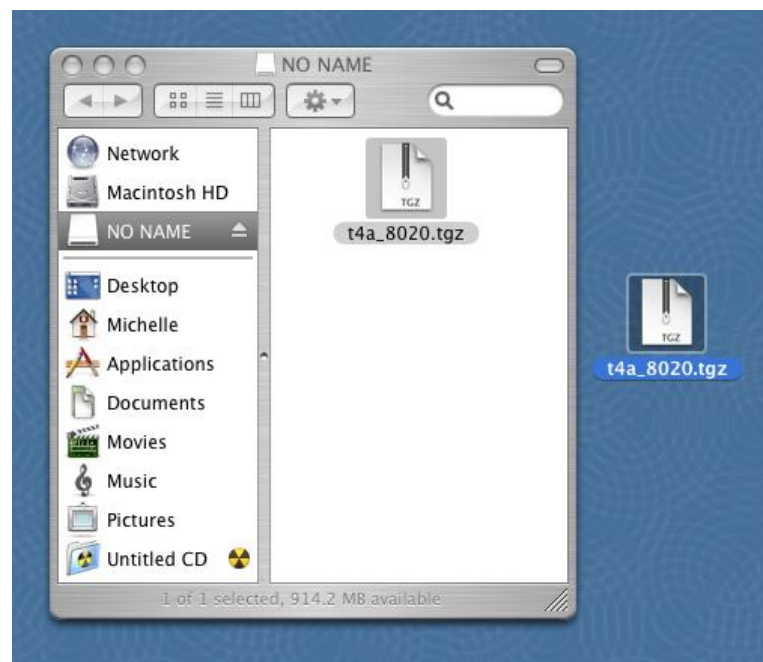
Step 2: Install Garmin Applications

Follow the installation instructions from Garmin and ensure that you have RoadTrip, MapInstall and MapManager installed on your Mac. Check under Applications if you see the software listed.

Step 3: Copy T4A GPS Maps to your Mac

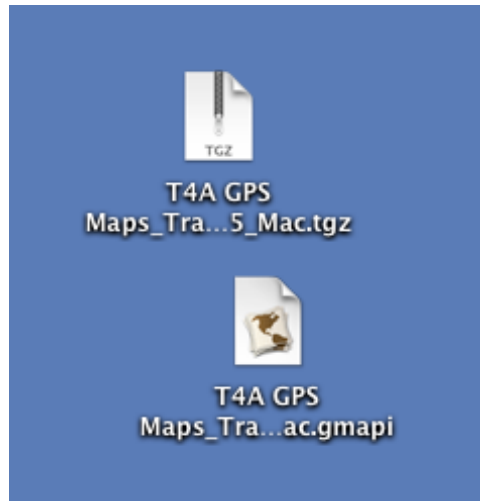
T4A GPS Maps have been converted to Mac format and placed on the Tracks4Africa SD card under the "**MAC Install Files**" folder.

Copy the file **T4AGPS Maps_Travellers Africa_1105_Mac.tgz** to your desktop.



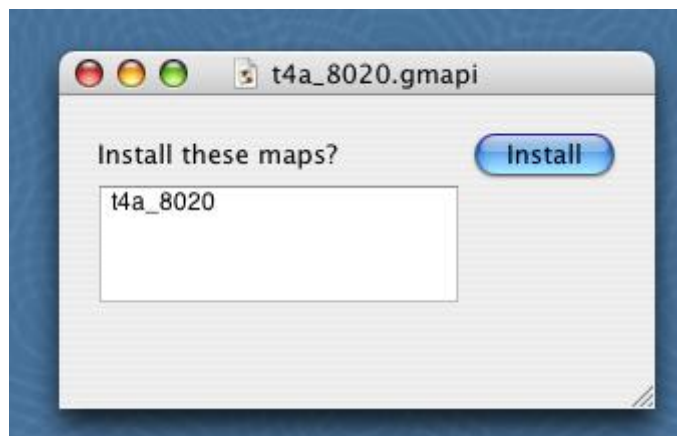
Step 4: Extract the Compressed Files

Double click on the TGZ file in order to uncompress it. A file with the same name but a GMAPI extension will be placed on your desktop. This file's icon should be similar to the MapInstall icon, indicating that your system recognises it as a MapInstall file type. Each TGZ file must be uncompressed, but if you have purchased the full T4A GPS Map you would only have a single TGZ file to extract.



Step 5: Install T4A GPS Maps

Now double click on each GMAPI file. This will launch MapInstall and you will be asked if you want to install this file, click Install.

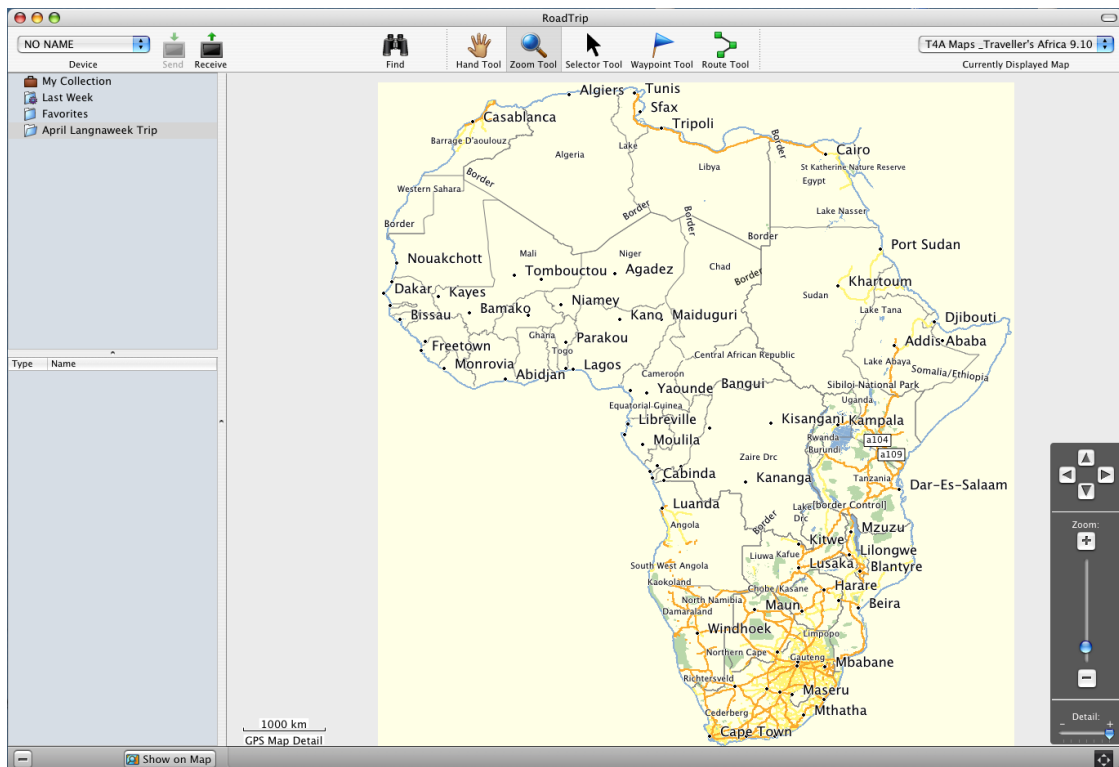


Step 6: Start using T4A GPS Maps with RoadTrip

Open RoadTrip from the Applications folder.



Now select the T4A GPS Map product you require from the Product selection box to the top right-hand corner of the window.



Step 7: Transfer T4A GPS Maps to your GPS

This step is not required if you have purchased a preloaded Plug & Play SD card. The SD card can be inserted in your compatible GPS and used as is.

Open MapInstall from the Applications folder and follow the installation instructions.

You will need to have your GPS connected to your Mac. If the GPS is not found by MapInstall, then try installing USB drivers from the Garmin website.

Selected maps for transfer in MapInstall will show as a light blue colour.