

How to install T4A GPS Maps

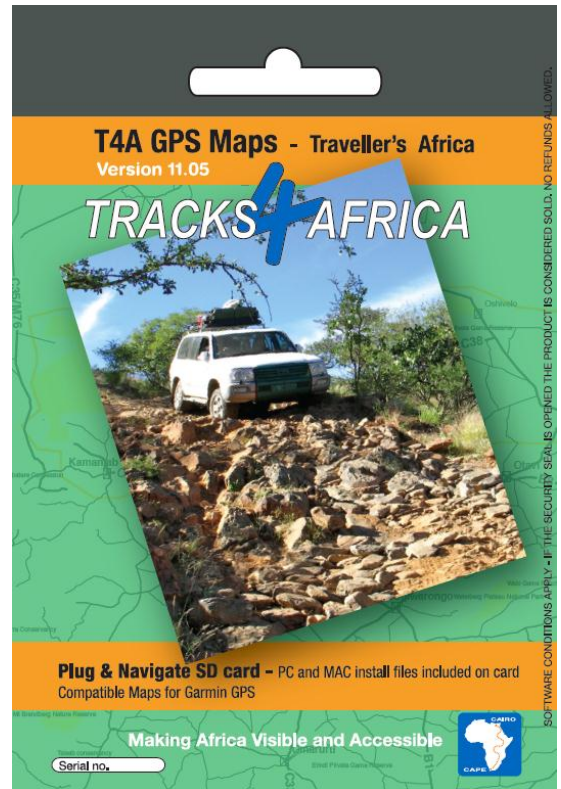
Option 1: Plug & Play SD Card

T4A GPS Maps are distributed on a Plug & Play SD card. This is an SD card with T4A GPS Maps preloaded and ready to use in your compatible Garmin GPS.

Compatible units are: Nuvi, Zumo, Colorado, Oregon and some of the newer 'x' range units, e.g. 60csx as well as the brand new GPSMap62 and 78 series of recreational units.

Step 1: Insert SD Card

- Switch off your GPS, remove any existing SD cards (keep in safe place)
- Insert the T4A GPS Maps SD card. Use either the Micro SD or the Micro SD plus Standard adapter depending on what type of SD card reader on your GPS



Step 2: Select T4A GPS Maps

- Switch on your GPS, browse to MapInfo on your menu and ensure that T4A GPS Maps are switched on. For Nuvi and Zumo units, this can be found by clicking on the 'spanner' (Tools). Then select **Settings>Map>MapInfo** to get to the screen where map selection is made
- If you had any previous versions of T4A GPS Maps installed on your GPS's internal memory you would need to remove this

Option 2: Load from your computer

For older GPS units which do not accept a Plug & Play SD card, you would need to install T4A GPS Maps on your computer and transfer the maps to your GPS, using MapSource.

Examples of older units that do not use an SD card are 276c, 76c and 60c.

STEP 1: Install MapSource

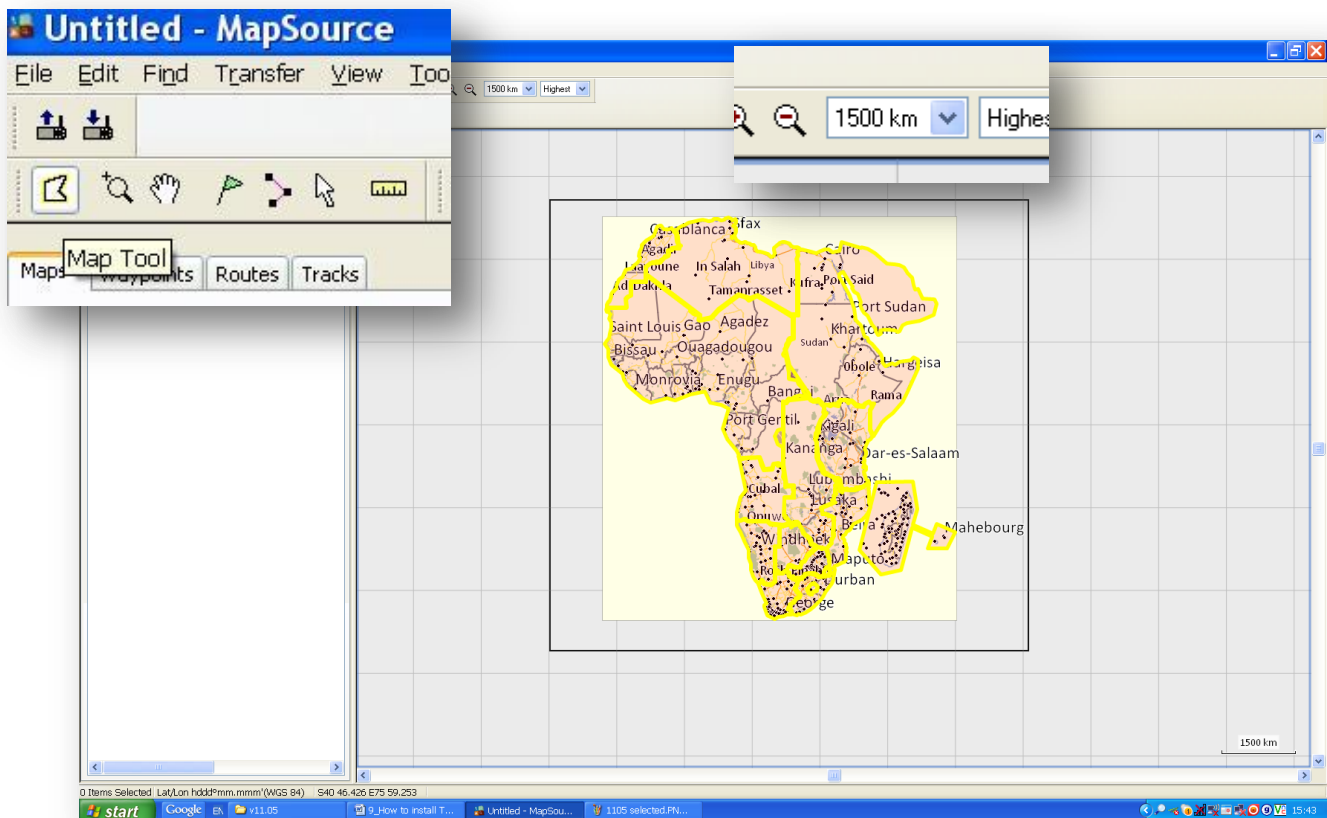
- If you already have MapSource installed on your PC then skip this step.
- If you do not have MapSource installed, obtain a copy and install it before you go ahead. See end of document for ways to obtain a copy of MapSource.

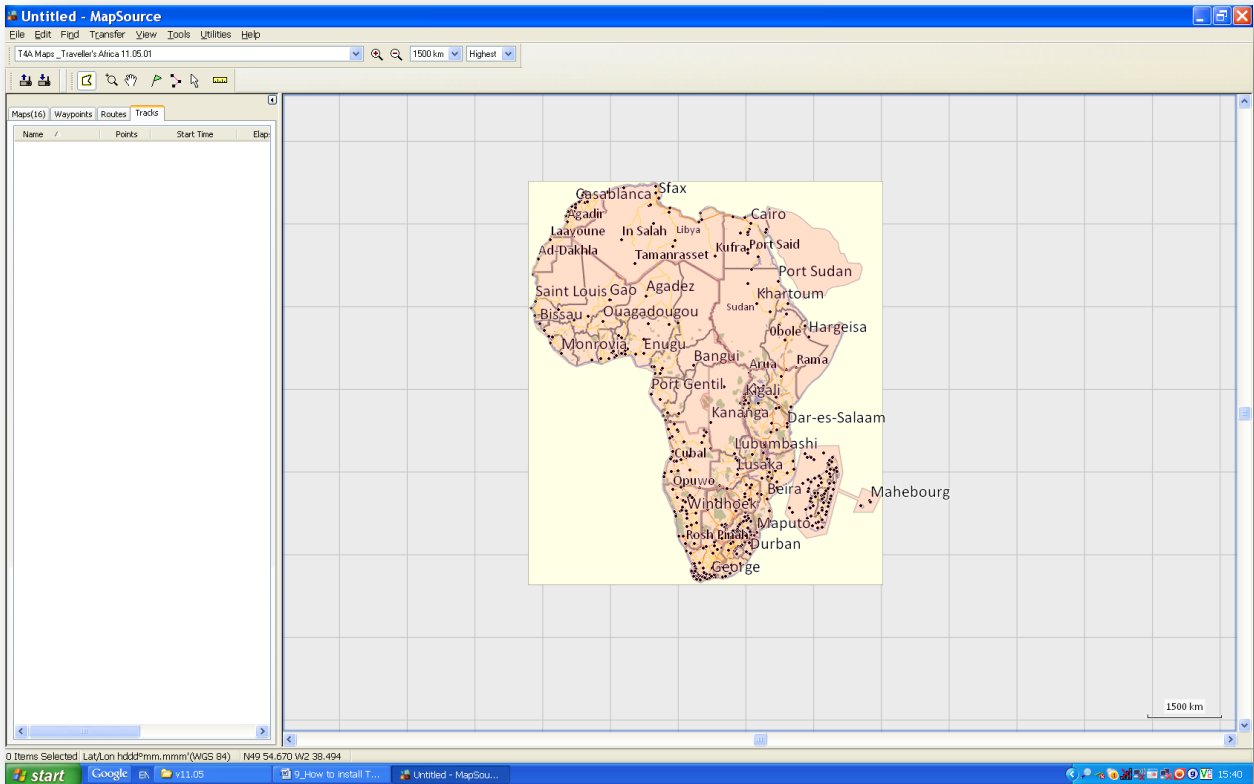
STEP 2: Install T4A GPS Maps to your PC

1. On the SD card there are install files for your PC. Insert the SD card into an SD card reader. Some GPS units, digital cameras and mobile phones can be used as SD Card readers when connected to your PC. The best option would be to use a dedicated SD card reader if your PC does not already have one.
2. Use Windows Explorer to browse the contents of the SD card, look in the folder called "**PC Install Files**". You will find the installation file in this folder.
3. Select **T4A GPS Maps_Travellers Africa_1105.exe** and run it.
4. Follow the instructions on the install wizard, then Exit. Now T4A GPS Maps are installed on your PC.

STEP 3: Transfer T4A GPS Maps from your PC to your GPS

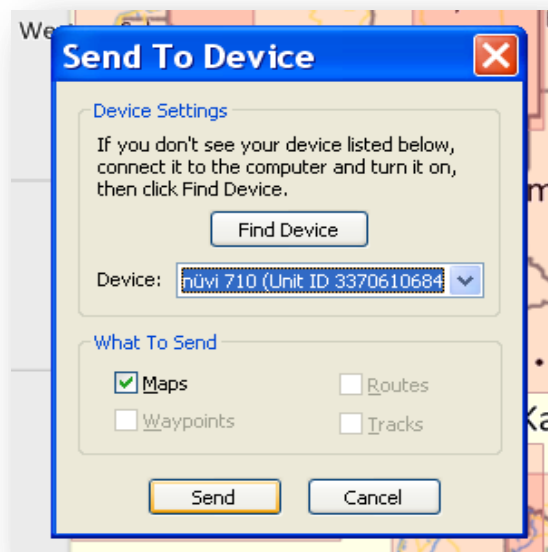
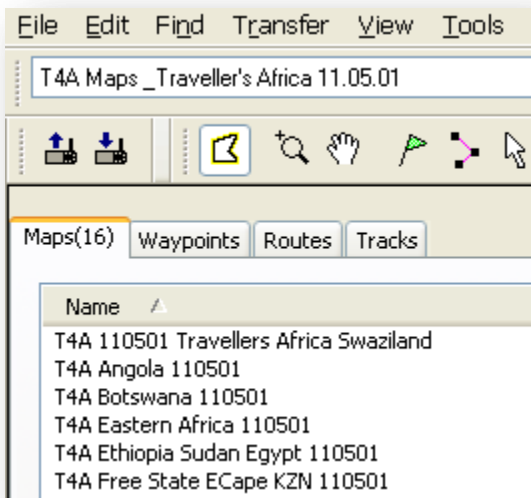
1. Open MapSource
2. Select T4A GPS Maps Viewer from the Product menu
3. Connect your GPS to your PC and make sure it is switched on
4. Use the Map Tool to select the maps you want to transfer (Drag a box around the entire map coverage).





A total of 16 maps should be selected.

From the **Transfer** menu, select **Send to device...** Select your device from the list and click on **Send**. The transfer process will take a couple of minutes. Do not operate or unplug your GPS before this operation has completed.



STEP 4: Select T4A GPS Maps on your GPS

1. Unplug and switch on your GPS. Go to the menu where you select the maps and make sure that T4A GPS Maps is selected.

Never use any two map products for the same area at the same time as it may result in conflicts. Simply select which one you need and switch the other off.

For Nuvi and Zumo units, the above can be found by clicking on the 'spanner' (Tools). Then select Settings>Map>MapInfo to get to the screen where map selection is made.

3 ways to obtain MapSource:

- 1) Buy any Garmin map product and install on your PC, it will install MapSource as part of the operation. This could be expensive. If you have bought your GPS in South Africa, then you most probably have a valid license for Garmap street maps which came bundled with the GPS. Get a copy of the Garmap DVD which retails for around R20. Follow the separate Garmap installation guide. This is a cheap option and you will have a copy of the street maps on your PC which is useful.
- 2) Buy Garmin Trip & Waypoint Manager. Not cheap either.
- 3) If you consider yourself tech-savvy then try the free download option. Search Google for “mapsource installation guide”. You would need to download at least 60Mb. If this scares you then you are not tech savvy.

Install MapSource

Most of the four options for installing MapSource involve installing from a DVD or CD. These products are all user-friendly and would guide you through the process.